



Formula(r).Notes 3.00

The most innovative framework for implementing processes for Lotus Notes and Browser clients.

NEW – Use the new functions in Formula(r).Notes to integrate your existing **Notes applications** in your **portal**.



13.04.2008

“Too many cooks spoil the broth” – and what is true for Irish Stew is definitely true for IT projects.

A **specialist** describes his “specialist requirements”, a **“consultant”** transfers these into a “requirements catalogue”, an **“IT department”** takes care of the technical implementation (usually with a **project manager** and several **developers**), the **gap-year student** tests the finished application and with a little bit of luck, at the very end of the process someone writes some **documentation**.

How much money could you save, if you could reduce the number of people involved, not to mention the communication costs between them?

Formula(r).Notes will allow you to evaluate this for yourself, easily!

Formula(r).Notes is a Lotus Domino-based system that allows you to create standardised, documented, web-compatible Notes applications.

A **rich-text field** allows the user to demonstrate his “fuzzy” concept of a data entry form to all participants **visually**. From the names of fields (customer, or partner?) to their position in the data-entry form and the views and actions that are required.

In the next stage of development, the user can define a process (identify the process steps, define the users responsible for each step as well as the workflow required between each step) and integrate this process in his form definition.

This step-by-step procedure produces a complete and easy to follow **requirements catalogue**.

Carrying out the action “Export as new (test) version” copies the contents of the requirements specification to a new form in an existing Notes database.

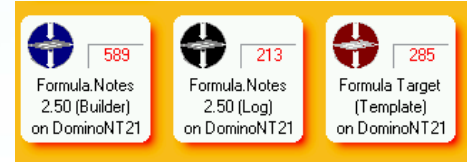
All the existing definitions are automatically translated into standardised code in the background. Forms, subforms and views are either updated (if redesigning existing forms) or are created as new forms in the existing database.

Every change to a process is archived in a **version management** record, and old version levels can be recovered at any time.

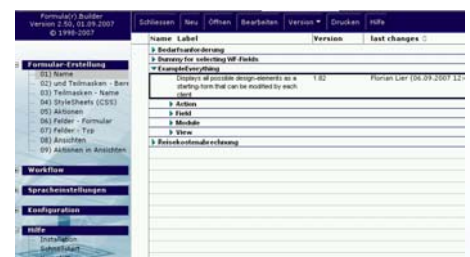
The **automatic generation** of source code almost totally excludes the possibilities of functional errors, and the rolled-out forms and/or processes can be deployed immediately.

Functionality:

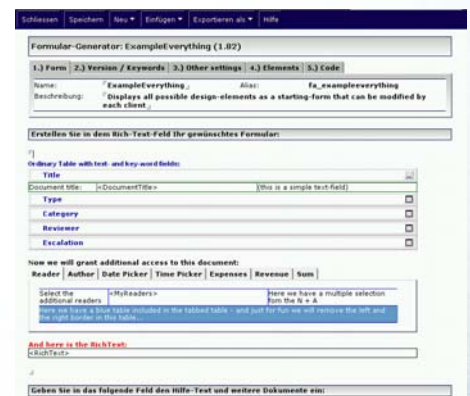
- a) **Web-enablement** of existing Notes applications – with just a few steps, existing data-entry forms, views and hierarchies can be migrated over to your **web portal**.



A Formula(r).Notes system comprising the form definition, version and application database



Form with fields, actions, subforms and views



Screen used to create a new form, consisting of general definitions (who can use this form, etc.), the form definition (this example uses tables) and a documentation area



Dialog used to enter a new data-entry field



Formula(r).Notes 3.00

The most innovative framework for implementing processes for Lotus Notes and Browser clients.

NEW – Use the new functions in Formula(r).Notes to integrate your existing **Notes applications** in your **portal**.



13.04.2008

- Create form definitions (**tables**, editable or calculated **fields** and **actions**), and global or form-dependent **sub forms**.
- Define **views**, actions.
- Define **processes** and **activities** as well as the responsible participants (editor, reader, etc.), mail information and reminders.
- Export the defined applications to a **test** or a **production** environment with automatic version management
- Automatically generate **standardised** code for the **Notes** client and the **browser** client (Internet Explorer, Mozilla and Netscape).
- In contrast to traditional Notes applications, both interfaces are identical in terms of their layout and functionality (e.g. tables with custom grids, **date picker** and **time picker** controls, **extendable keyword fields**, **pick lists**).
- With **configurable interfaces** you can access any other IT system (**Notes** databases, **SQL Server**, **SAP**, **ODBC** connections, etc.).
- "**Microsoft Word**" forms can be converted into a Notes database automatically via an **import** function.
- Automatic version management of all interim states and the option to **roll back** to an earlier state with a single click of the mouse.
- Reuse** design elements (actions, subforms, processes) that have already been successfully implemented, similar to the template functionality in Lotus Domino.
- Automatically generate **computed fields** using **wizards** (e.g. in 14 days or on the 1st of the next month).
- Multilingual**
- Status-dependent** data entry fields and subforms.

Areas of use

SMEs: Completely meet all requirements defined by the user (without the need for an external consultant)

Groups: Let specialist departments define the requirements (prepare a requirements catalogue) which are then implemented by the operator, possibly enhancing the generated application by creating additional agents, views, subforms, etc.

Integrators: Fast implementation of customer requirements (approx. 2 days per application from gathering requirements to roll out)

System requirements:

Formula(r).Notes 3.00 runs on Lotus Notes versions 6 and 7.

Entry options dependent on field type (in this case a date field)

Wizard used to create formulas (in this case: +14 days)

Entry form in Lotus Notes

Entry form in Internet Explorer