



Ante.Clavis 2.50

The most innovative system for analysing Lotus Notes databases since the invention of the wheel!



13.04.2008

Ante.Clavis is THE documentation and analysis tool for all questions regarding your existing Domino infrastructure

With freely definable filters, it can evaluate the source code of databases and their configuration for the existence of "Challenges". All you need is read access to the database.

You can start an evaluation with Ante.Clavis either on opened databases or in the form of a defined batch job (e.g. all the databases in the "apps" directory) at any time.

The structural elements contained in the Notes database are transferred over to Notes documents, and the source code they contain is evaluated.

Functionality:

- The **code** is stored in only **one location** → a full-text search produces just one hit
- The **layout** of **forms** (in particular, **Hide-When** formulas and the position of fields) is transferred exactly from the design. → You can see how the design will look, without the need for a Designer Client.
- With configurable filters, Ante.Clavis allows you to **verify style guides** and **programming guidelines**. Are all fields correctly formatted? Do the fonts used in views fulfil requirements?
- Ante.Clavis identifies **every link** between design elements **within a database**. As soon as you open the evaluation of a form, you can see in which views and actions the form is used, and which subforms, fields and libraries are integrated with it.
- Only those **functions / classes** that are **actually referred to** are recorded in the results. This reduces the result to the relevant dependencies.
- Ante.Clavis enables **automatic creation** of technical **documentation** with **2 clicks of the mouse**. This means that the documentation will still reflect the available source code, even after the 10th change request.
- The analysis of a database evaluates the **quality** of the **source code** (e.g. existence of comments) and the **appropriateness** of the **efforts** expended.
- Evaluate forms and subforms, views, agents, libraries, style sheets, applets, fields, pages, framesets and much more...
- Create **delta reports** from different databases and graphical visualisation of "modifications"
- Evaluate design modifications in a specific **time period**.
- Display the results from the 4 areas **Settings** (e.g. selection formulas), **Layout** (form design), **Background code** (e.g. actions in forms) and **Dependencies** (where is this design element used, and what others use me?)

These are Ante.Clavis' main distinguishing features in comparison with other analysis tools – it fills the gaps left by the other tools when visualising the results of the analysis.



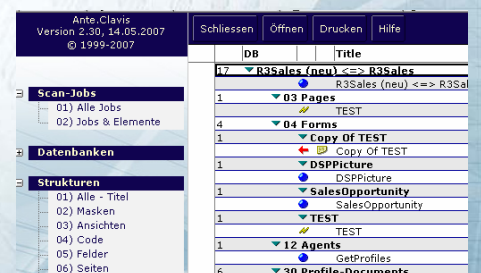
A Scan job can process several databases on different servers



Select the design elements to inspect



Results report split into "Settings", "Layout", "Code" and "Links".



Results of a delta report comparing two databases



Ante.Clavis 2.50

The most innovative system for analysing Lotus Notes databases since the invention of the wheel!



13.04.2008

Areas of use

Moving server: An automotive supplier has purchased a competitor (therefore acquiring its Notes infrastructure). Now all applications must be consolidated on the central servers. Ante.Clavis can identify over 1,000 design elements (forms, agents, etc.) with hard-coded server names and file names and links to the file system in the pool of 151 existing databases.

Agent signatures: A manufacturing company has deployed Ante.Clavis to analyse databases that are to be moved over to production. On the basis of the code evaluation (including of integrated libraries) developers can decide what permissions (restricted/unrestricted) must be used to sign an agent.

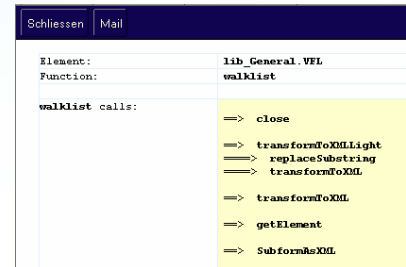
Changing mail platform: A company in the healthcare sector has used Ante.Clavis to check all existing databases (more than 500) for existing mail functions. The results were used to produce an accurate assessment of the impact of a change in the mail platform.

Analysis/documentation of applications: A consultancy has deployed Ante.Clavis to analyse third-party application databases that it has been asked to manage in the future. This allows the company to assess the risks in taking on this work before starting. Modifications to transferred systems can be documented automatically with Ante.Clavis. Missing documentation can quickly be produced thanks to functions to automatically produce documentation in MS Word format.

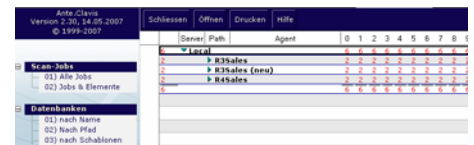
Server problems: A customer in the publishing sector keeps on suffering crashes on its main application and mail server. Using Ante.Clavis, the server workload was optimised (by modifying the times of scheduled agents) and the agent code that was responsible for the crashes were identified and corrected.

System requirements:

Ante.Clavis 2.50 runs on Lotus Notes versions 6 and 7.



Automatically created list of calls from a function in a library

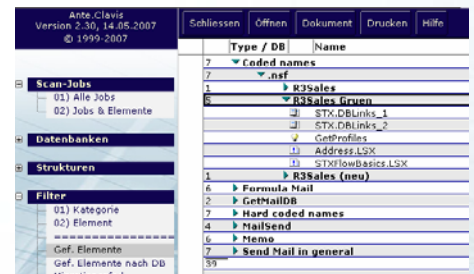


Evaluation of server workload

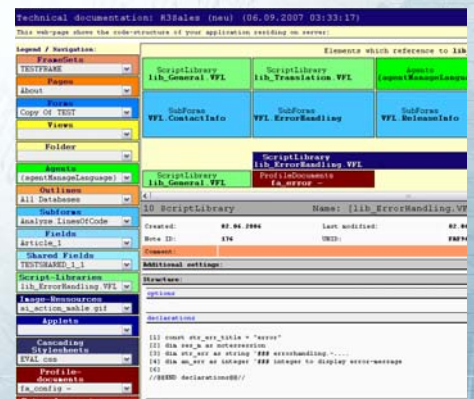
Berechneter Aufwand: 3139 (min) - 6,54 (Tage)			
Zeilen LotusScript:	2605	Dokumentiert:	808
Zeilen @Formel:	258	Dokumentiert:	31
Zeilen Java:	0	Dokumentiert:	0
Zeilen JavaScript:	0	Dokumentiert:	0

ACL-Einstellungen:

Evaluation of database complexity



Located filter elements



Example of database documentation created using Ante.Clavis